

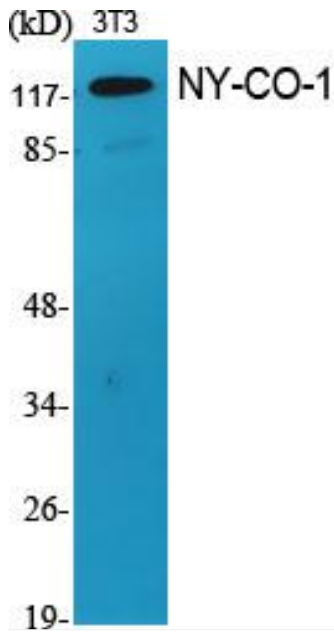


# NY-CO-1 Polyclonal Antibody

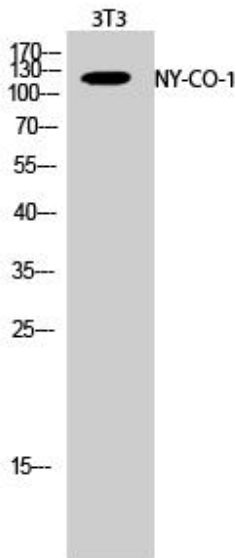
<b>Catalog No</b>	YP-Ab-00466
<b>Isotype</b>	IgG
<b>Reactivity</b>	Human;Mouse;Rat
<b>Applications</b>	WB;IHC;IF;ELISA
<b>Gene Name</b>	NEMF
<b>Protein Name</b>	Nuclear export mediator factor NEMF
<b>Immunogen</b>	The antiserum was produced against synthesized peptide derived from human SDCG1. AA range:881-930
<b>Specificity</b>	NY-CO-1 Polyclonal Antibody detects endogenous levels of NY-CO-1 protein.
<b>Formulation</b>	Liquid in PBS containing 50% glycerol, 0.5% BSA and 0.02% sodium azide.
<b>Source</b>	Polyclonal, Rabbit,IgG
<b>Purification</b>	The antibody was affinity-purified from rabbit antiserum by affinity-chromatography using epitope-specific immunogen.
<b>Dilution</b>	WB: 1/500 - 1/2000. IHC: 1/100 - 1/300. ELISA: 1/20000.. IF 1:50-200
<b>Concentration</b>	1 mg/ml
<b>Purity</b>	≥90%
<b>Storage Stability</b>	-20°C/1 year
<b>Synonyms</b>	NEMF; SDCCAG1; Nuclear export mediator factor NEMF; Antigen NY-CO-1; Serologically defined colon cancer antigen 1
<b>Observed Band</b>	123kD
<b>Cell Pathway</b>	Cytoplasm, cytosol . Nucleus .
<b>Tissue Specificity</b>	Expressed in brain, heart, liver, lung, spleen, and skeletal muscle. Also expressed at lower levels in stomach and testis.
<b>Function</b>	
<b>Background</b>	This gene encodes a component of the ribosome quality control complex. The encoded protein facilitates the recognition and ubiquitination of stalled 60S subunits by the ubiquitin ligase listerin. A similar protein in fly functions as a tumor suppressor. [provided by RefSeq, Jul 2016],
<b>matters needing attention</b>	Avoid repeated freezing and thawing!
<b>Usage suggestions</b>	This product can be used in immunological reaction related experiments. For more information, please consult technical personnel.



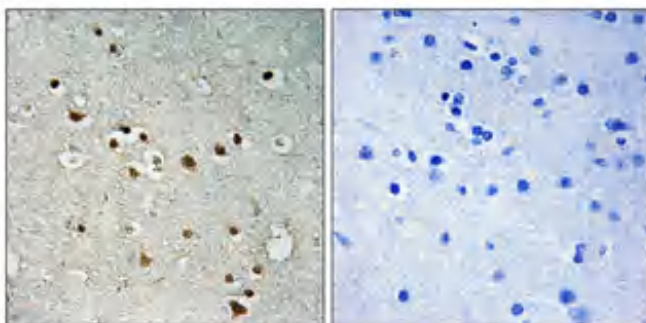
## Products Images



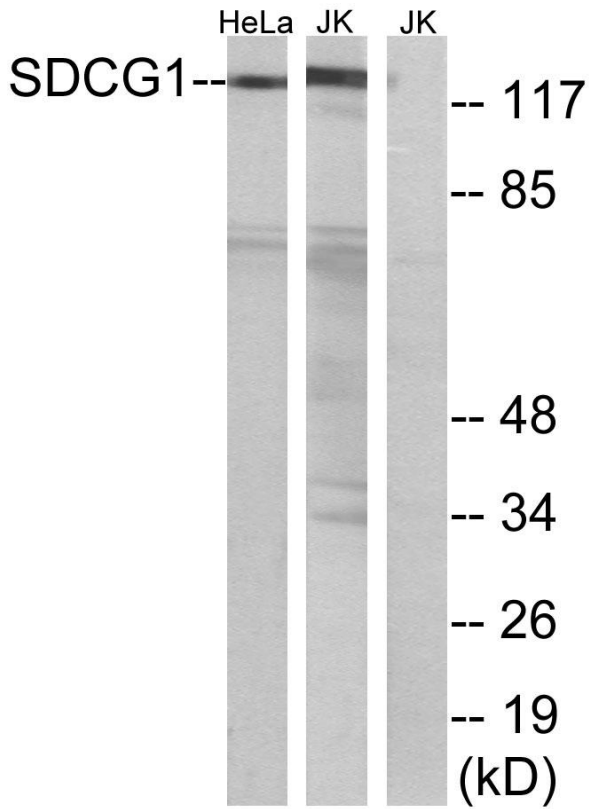
Western Blot analysis of various cells using NY-CO-1 Polyclonal Antibody



Western Blot analysis of 3T3 cells using NY-CO-1 Polyclonal Antibody



Immunohistochemical analysis of paraffin-embedded Human brain. Antibody was diluted at 1:100(4° overnight). High-pressure and temperature Tris-EDTA,pH8.0 was used for antigen retrieval. Negative contrl (right) obtaned from antibody was pre-absorbed by immunogen peptide.



Western blot analysis of lysates from HeLa and Jurkat cells, using SDCG1 Antibody. The lane on the right is blocked with the synthesized peptide.